

REV.	ECN NO.	LOCATIONS	DESCRIPTION	DATE	DESIGN
A1			MODIFY SOME DETAIL	07/11'19	Hank

ORDERING INFORMATION

MCCF - W0N1 (XX T)

① ② ③

① **PRODUCT SERIES:**

USB C TYPE connector -
Receptacle (Female) side.

② **ITEM NO.:**

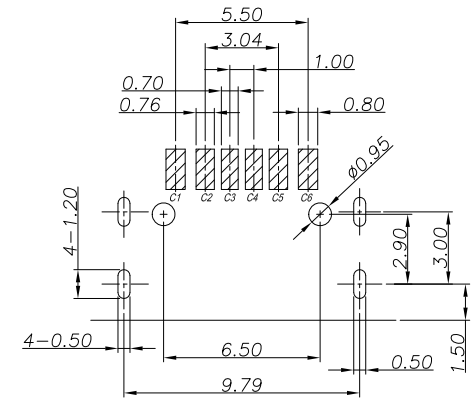
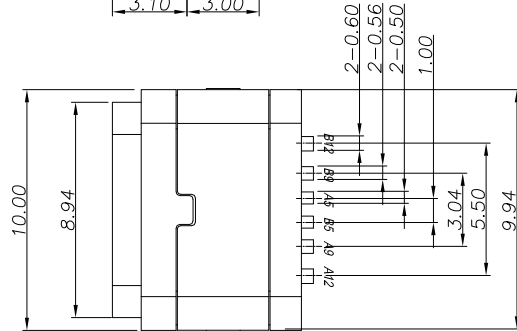
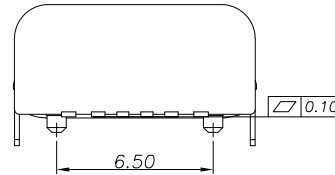
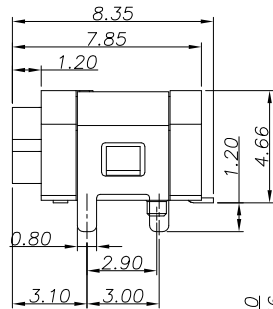
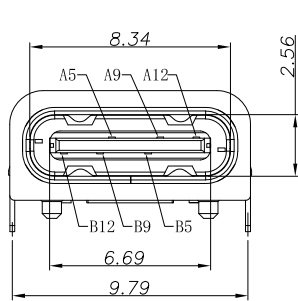
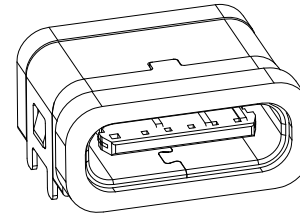
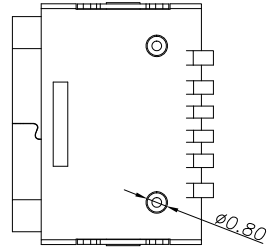
Right Angle- Single Row 6pin
Dip+SMD With Post/
Waterproof IPX1.

CUSTOMER DRAWING

RoHS Compliant

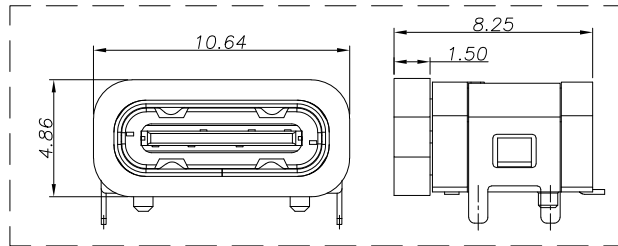
③ **GOLD PLATING :**
01: 1u".

3D VIEW



RECOMMENDED P.C.B. LAYOUT

WATERPROOF RING REFERENCE



PIN ASSIGNMENT:

PIN NO	A1&B12	A4&B9	A5	B5	A9&B4	A12&B1
SIGNAL NAME	GND	VBUS	CC1	CC2	VBUS	GND
PCB PAD NO.	C1	C2	C3	C4	C5	C6

DIM	TOL
x.x	±0.30
x.xx	±0.20
x.xxx	±0.10

NOTES:

1. MATERIAL:

- (1) HOUSING: HIGH TEMP plastic, UL94 V-0.
- (2) CONTACT: COPPER ALLOY.
- (3) MID PLATE: STAINLESS STEEL.
- (4) SHELL: STAINLESS STEEL.

2. PLATED:

- (1) CONTACT: GOLD ON CONTACT AREA OVER NICKEL PLEATED OVER ALL.
- (2) SHELL: NICKEL PLATED OVER ALL.
- (3) MID PLATE: CLEAR ONLY

SUNFUN		SUNFUN TECHNOLOGY LTD			
DRAW NO.	MCCF-W0N1(A1)	DATE	07/11'19	MATERIAL:	SEE NOTES
DESIGN:	Hank	07/11'19	FINISH:	SEE NOTES	DRAW NAME:
CHECK:	Hank	07/11'19	FILE:	MCCF-W0N1(A1)	USB C Type CONN - FEMALE
REVIEW:	Frank	07/11'19	P/N:	MCCF-W0N1(XXT)	Right Angle/ Single Row 6pin/ Standard On Board/ Waterproof IPX1
APPROVED	Frank	07/11'19	REV. A1	SCALE	MODEL: USB C TYPE CONN
					UNIT: SHEET: 1/1